



BRONCO ROOF LIGHT BAR



53103

INSTALLATION GUIDE

FOR ALL OUR USER MANUALS PLEASE VISIT WWW.LMI.BIZ/INSTALLATION-ASSISTANCE

MANUAL FOR END USER AND INSTALLER

Thank you for your purchase. At **LMI** we strive to ensure our products fit your vehicle correctly and with no issues. However, due to the large number of manufacturer models and trim levels, it is difficult to test every scenario. If you find that something does not fit correctly, please reach out to us so we can make the appropriate adjustments.

Please understand that making modifications to your vehicle can void the manufactures warranty, and in some cases my cause damage to your vehicle, cause your vehicle handle differently, affect your effect your vehicle safety system, effect your gas mileage, or cause wind noise. **LMI** is not responsible for any adverse effects this product may cause to your vehicle.

For further information please contact:

LMI

4611 E Virginia Street, AZ 85215

T: 480.613.6544

E: Info@lmi.biz

www.lmi.biz

TABLE OF CONTENTS

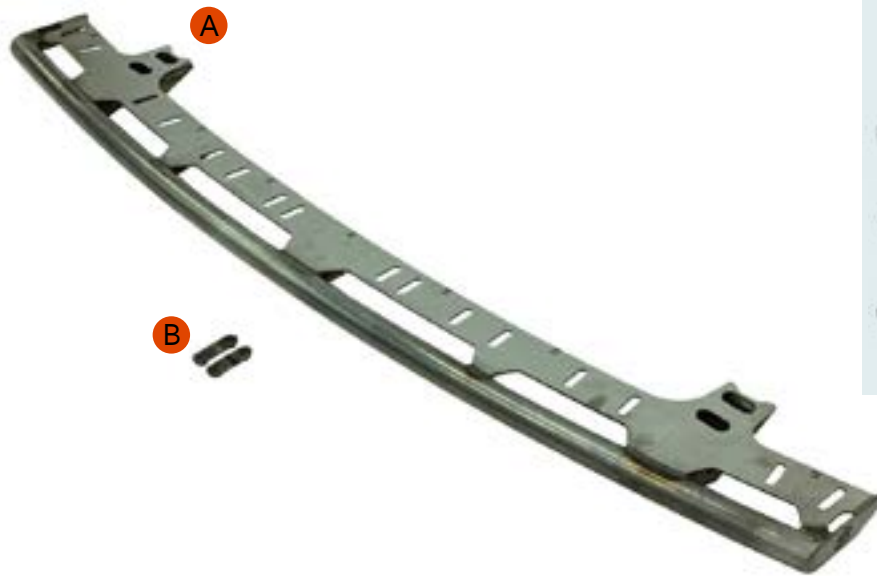
Page 3	Included in Box
Page 3	Required Tools
Page 4	Product Description
Page 4	Installation Preparation
Page 5	Installation
Page 11	Maintenance
Page 12	Product Dimensions




PRODUCT SPECIFICATIONS

Product Name	Product ID	Product Size	Weight	Light Spacing Options
Bronco Roof Light Bar	53103	(1448 x 44.5)mm (57 x 1.75)in	18 lbs	3 to 8 Light With 2 Ditch Lights

INCLUDED IN THE BOX

Several components are included in the product packaging, each of which is critical for your successful setup. If any parts are missing please reach out to us for assistance.



- A** LM1 Roof Mount Light Bar
- B** 2X Roof Rack Nut Plate
-  4X 5/16-18 x 1.00LB Bolt (not shown)
-  4X 5/16 Flat Washer (not shown)
-  4X 5/16 Lock Washer (not shown)

REQUIRED TOOLS



Plastic Pry Bar



7mm, 10mm, 1/2in Socket



Ratchet



Socket Extension



3/8in Drill Bit / Drill



Silicone



Painters Tape



Safety Glasses



Grab a Buddy, 2 Person Job

INTENDED USE

LMI Light Bars are intended to provide mounting options for aftermarket lighting solutions. For other applications, please contact a representative at **LMI**.

Any use other than the approved intended use described above is considered an unintended use. **LMI** cannot be held responsible for possible consequential damage caused by improper, incorrect or inadvisable use.

SYMBOLS USED

The following symbols are used in this manual to draw attention to specific topics or actions

WARNING

A warning indicates the possibility of injury to the user and/or damage to the product should the user not perform the procedures as described.

ATTENTION

A note alerts the user to potential problems which may occur if a procedure is not carried out as described.

INSTALLATION PREPARATION

Before beginning your installation, please ensure that you have received all components listed in the “Included in the Box” sections above. If you are missing anything please reach out to us.

Prepare your work space and gather all the required tools listed above. Place painters tape on the vehicle around the installation area to protect your vehicle.

ATTENTION

If you have elected to purchase a product with powder-coat, take caution not to scratch or chip the coating by placing the product on a protected surface.

WARNING

Fabricated products are made from heavy gauge steel and will frequently have sharp edges. If the product is dropped or slid across your vehicle, it can cause damage.

INSTALLATION

After your work space is prepared, install the **LMI** Light Bar by completing the following steps.

1. Remove the two caps that cover the accessory mounts, located above the Bronco windshield. The two caps will not be installed later.

2. Remove the four nuts from the accessory mounting studs using a 10mm socket. Retain the nuts for later installation.

ATTENTION

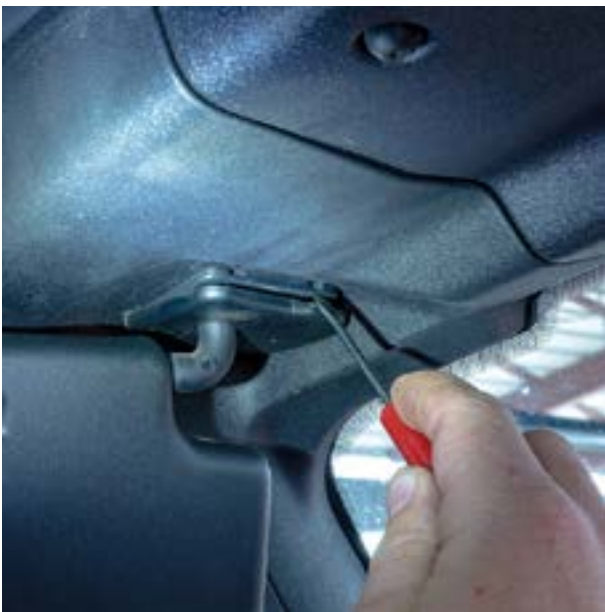
LMI Light Bars are heavy and can be awkward to handle. Grab a friend to help!



3. Inside the vehicle, remove the sun visors to gain access to the underside of the Bronco roof accessory mount location.

Rotate the sun visor toward the door to gain access to the trim at the sun visor mount location. Remove the trim using a plastic trim tool by placing the pry tool under the inside edge (toward the center of the vehicle) and prying downward. Repeat the process on the outward side of the trim.

Once the trim is loose, move it down the sun visor arm to gain access to the mounting fastener.



ATTENTION

The trim can be easily damaged. Take caution not to break the trim.

4. Remove the sun visor fastener using a 7mm socket. Retain the fastener for re-installation.



5. After the fastener has been removed, rotate the sun visor back toward the windshield, do not clip it into it's storage position, and then rotate the sun visor upward toward the ceiling. This will rotate the sun visor mount out of position and release it.

ATTENTION

Take caution to not damage the cable and connector by pulling the cable to tight.



6. Disconnect the connector from the sun visor by pressing the release tab and pulling the connector free.

Set the sun visor aside for re-installation later.

Repeat the same process on the passenger side of the vehicle.



ATTENTION

Take note of the retained nut clip just inside the exposed access hole. The nut can be removed by sliding it toward the larger side of the access hole.

Use caution not to lose the nut in the access hole.



7. Temporarily install the Roof Mount Light Bar on the Bronco accessory mounting locations. Temporarily install the four Bronco accessory nuts, removed in step 2, to temporarily hold the Roof Mount Light Bar. Tighten the nuts finger tight.

Mark additional hole locations using the Roof Mount Light Bar as a template. Using a transfer punch will make this process easier.

After all four holes are marked on the vehicle, remove the Roof Mount Light Bar and set it aside for later installation.



8. Drill four holes in locations marked in the previous step using a 3/8 inch drill bit. Take caution to ensure that the holes are drilled in the correct location, failure to do so will cause problems during installation.

WARNING

Wear safety glasses while drilling, failure to do so may cause personal injury.



9. Apply RTV silicone around each of the 4 newly drilled holes.



10. Install the Roof Mount Light Bar on the Bronco accessory mounting locations. Install the four Bronco accessory nuts, removed in step 2, to loosely hold the Roof Mount Light Bar. Tighten the nuts finger tight, fasteners will be tightened in a later step.

ATTENTION

LMI Light Bars are heavy and can be awkward to handle. Grab a friend to help!



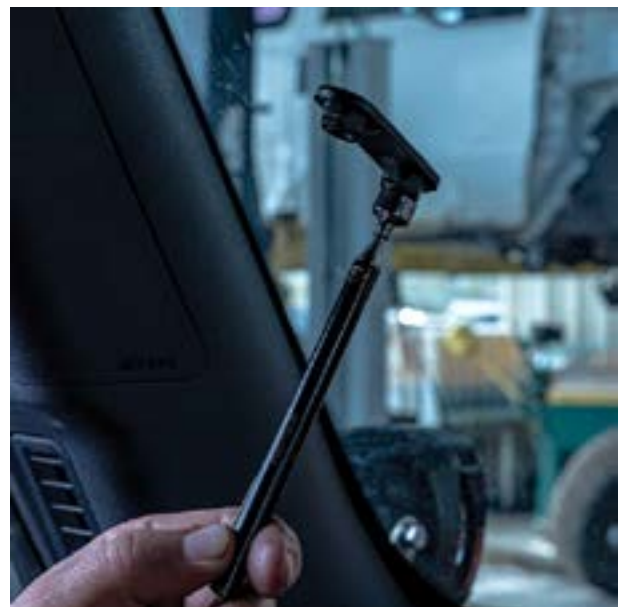
11. Gather the four provided 5/16-18 fasteners, four flat washers, and four lock washers. Apply RTV silicone to the four washers and fasteners as shown.

Place two fasteners in the forward most holes on the Roof Mount Light Bar.



12. Align the provided nut plate to the installed fastener by fishing the nut plate into the access hole. Note that a magnet stick works well to hold the nut in place as access is limited. Thread the fastener down but do not tighten at this time.

Rotate the nut plate to align the second hole and install the last two fasteners into the rear most holes in the Roof Mount Light Bar.



13. Tighten the Bronco accessory mount point fasteners to 8 inlbs, and the 5/16 fasteners to 16 inlbs.

Reinstall the sun shades by: connecting the connector, installing the previously removed bolt and tightening to 4 inlbs, and replacing the trim.



14. The **LMI** Light Bar has a number of light mounting slots that set the light to light mount spacing for you. See the Product Dimensions section below for details. After you have installed lights in the orientation of your picking, there are several zip-tie mounting locations that will assist you in routing the wire harness.

Time to take your rig out for a test and show off your new light bar to your friends! Once again, thank you for your purchase. We hope you enjoy your newly installed product.

MAINTENANCE

ATTENTION

Powder coat is a relatively durable coating. All our products are sand blasted prior to powder coating to ensure the bond is optimized. However, it is possible to chip or scratch the coating. When this happens use metal bonding paint to touch up the damaged areas. This will prevent rust in the damaged area.

CLEANING

- **LMI** products can be cleaned using any standard automobile cleaning products.
- Never use solvents or petroleum-based cleaners as they will cause damage to the coating.

PRODUCT DIMENSIONS

